

Company Profile

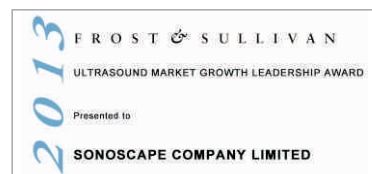
Since its establishment, SonoScape has been committed to providing high quality medical equipment for the healthcare sector. SonoScape specializes in the development and production of diagnostic ultrasound solutions. By introducing advanced imaging techniques, SonoScape has improved diagnostic accuracy and therefore enabled better health outcomes. Since 2002, SonoScape has reached and benefited millions of people. With the world in mind, SonoScape will continue providing more effective and accessible healthcare solutions, through persistent innovation and passion for life.

Quote from the Analyst of

"The Frost & Sullivan Award for Growth Leadership is presented to the company that has demonstrated excellence in capturing the highest annual compound growth rate for the last 3 years...The sales of ultrasound devices contribute an overwhelming proportion of total revenue, helping the company strengthen its leading position to outperform the competitors in the marketplace. With increasing penetration of mid-to high-end ultrasound devices, SonoScape is expected to see significant growth potential in the future..."

Company Milestone

2002: Company Founded in Shenzhen, China
2003: Released SSI-1000: the 1st 15" Portable Color Doppler system in China
2004: Released SSI-2000: the 1st PC platform Color Doppler system in China
2005: Received the "High Technology Company" award from the PRC government
2007: Received "CHINA TOP BRAND" award in the Medical Equipment Industry
2007: Released the 1st Real time 4D ultrasound system in China
2008: Received "European Entrepreneurial Company 2008" award from FROST & SULLIVAN
2008: Received "Flagship Company" award in the Medical Equipment Industry in China
2009: Received "Product Quality Leadership Award 2009" from FROST & SULLIVAN
2011: Received the Reddot 2011 Product Design Award for S20 in Essen, Germany
2013: Received "Ultrasound Market Growth Leadership Award, 2013" from FROST & SULLIVAN
2014: Received the iF Product Design Award 2014 for S9 in Munich, Germany



SonoScape

Eloi Médical / Division Echographie
2 rue Camille Desmoulins 92307 Levallois-Perret Cedex
Tél : +33 (0)1 46 17 06 20
E-mail : echographie@eloimedical.com

SonoScape

S12



U-201409

Caring for Life through Innovation



SonoScape's trolley color Doppler system S12 redefines price and performance with practical design. The S12 will go beyond your expectations but not your budget. As an easy-to-use ultrasound system, the S12 is integrated with a new software platform especially optimized for smooth workflow and convenient operation. The system will speed up the exam process and make file management much easier.

Amazing performance, Beyond your expectation

- 15-inch high definition LED monitor with articulating arm
- Compact and agile trolley design
- Three active transducer sockets available for a wide range of applications
- Duplex, Color Doppler, DPL, PW Doppler, tissue harmonic imaging, u-scan speckle reduction imaging, compound imaging, trapezoidal imaging
- Customized settings based on your own working style
- Full patient database and image management solutions: DICOM 3.0, AVI/JPG, USB2.0, HDD, DVD and PDF report

S12

Precise Capabilities, Improve Doctors' Early Detection Confidence

The increasing case of severe disease, mainly due to too late detection of the small abnormalities and small lesion heralds us the significance of early detection, committed to providing the precise image quality for doctor's accurate judgment, S12 stay focusing on the capabilities of scanning for doctors' early detection, will helps you to improve the clinical confidence.



Versatile application, Meet the daily diagnosis

Complete scanning mode, outstanding 2D performance, sensitive blood flow, freehand 3D and volume 4D imaging technology; endow S12 with the best package for all applications:

Cardiovascular

- Steer M imaging (Anatomic M mode)
- Color M imaging
- Embedded IMT (Intima-Media Thickness) Software detects edge with mean and maximum thickness value.

Obsterics/Gynecology

- New 3D/4D work flow and technology
- Super wide angle FOV
- Unique transducer temperature detection technology, reduce the patient's pain and guarantee the quality and safety of the transducer

Anesthesiology / Emergency Medicine / Musculoskeletal

- Abundant and dedicated clinical measurement and analysis packages
- Image enhance technology: SCI, real-time panoramic, trapezoid
- Wide range of broadband transducers including convex, linear, transvaginal, phased array and 4D transducer

